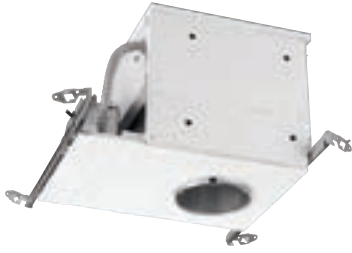


4" Recessed

Fire Rated Housing



For complete fixture, order housing with trim.



New Construction Fire Rated Ceilings with E26 socket

P831-FB

Ceiling Opening: 4-1/2"
Recessed Depth: 9-1/8"
Plaster Frame: 9-9/16" x 13-1/4"
Pryouts: 1/2" and 3/4"

P831-FB HOUSING FEATURES

- UL Classified to maintain fire ratings of 1 hour or less for L500 and G531 series roof/ceiling designs.
- UL Classified to maintain fire ratings of 2 hours or less for UL D200, D500, G200, G500, L200 and L500 series floor/ceiling designs.
- UL-CUL listed for damp location and feed through wiring.
- Non-IC rated*.
- Fits Into 2" x 10" construction.



U.S. Patent #: 5758959, 6004011, 6357891, 6254527

Trims - Non-IC

5" outside diameter. All trims have 360° positioning. Lamps tilt 20°.



OPEN
P8041-28 White
55w PAR16,
50w PAR20, R20



STEP BAFFLE
P8044-09 Brushed Nickel
P8044-31 Black
P8044-28 White
55w PAR16,
50w PAR20, R20



STEP BAFFLE
P8044-20 Antique Bronze
55w PAR16,
50w PAR20, R20



OPEN SHOWER
P8041WL-28 White
Wet location listed.
50w PAR20
Wet Location trims require use with outdoor rated PAR lamps



EYEBALL
P8046-09 Brushed Nickel
P8046-20 Antique Bronze
P8046-28 White
40w PAR16, 30w R20



WALL WASHER
P8047-31 Black Baffle
40w PAR16, 35w R20



PINHOLE SPOT
P8042-28 White
40w PAR16, 30w R20